

Measuring Data on Chronic Measures

ODA Primary Health Care Network tracks performance data on chronic care measures quarterly. Data is measured for Coronary Artery Disease, Diabetes, and Hypertension. This data is run using the entire ODA Primary Health Care Network patient population. All facilities within ODA Primary Health Care Network operate under the same rules and regulations. The following charts show ODA's performance for October 1, 2014 through September 30, 2015 in all three areas. Please note that all facilities within ODA Primary Health Care Network operate under the same rules and regulations.

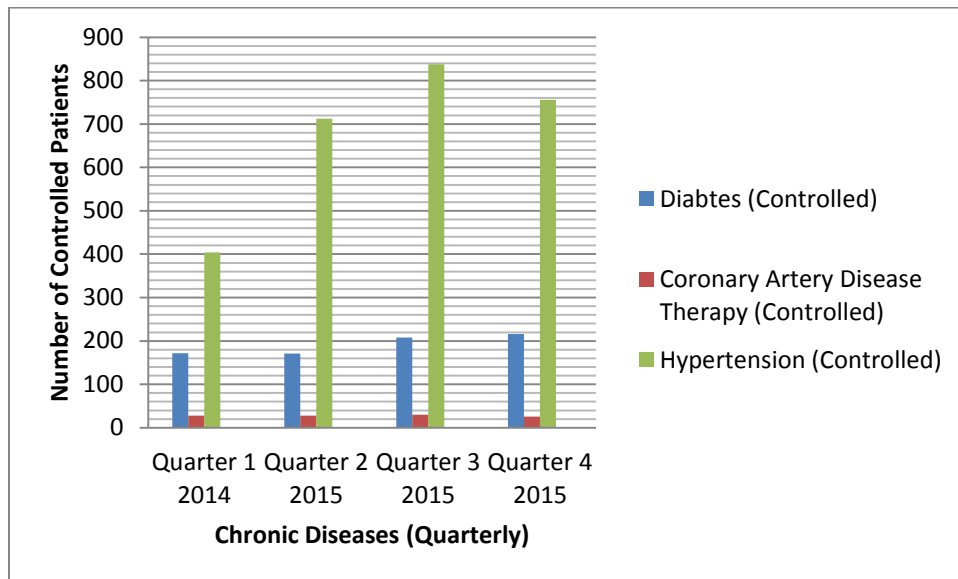
Coronary Artery Disease Therapy			
	LDL therapy	# of patients	Percentage
Q4 2004	28	42	67%
Q1 2015	28	46	61%
Q2 2015	30	46	65%
Q3 2015	26	38	68%

Diabetes			
	HgbA1C Below 8	# of patients	Percentage
Q4 2014	172	407	42%
Q1 2015	171	438	39%
Q2 2015	208	465	45%
Q3 2015	216	504	43%

Hypertension			
HTN Control			
	Controlled	# of patients	Percentage
Q4 2014	404	679	59%
Q1 2015	712	1,270	56%
Q2 2015	838	1,333	63%
Q3 2015	756	1,234	61%

Figure 2:

The figure below demonstrates the comparison between the three chronic measures for all four quarters. According to the data, Hypertension has the highest amount of controlled participants followed by diabetes. It can clearly be seen that there was an increase in Hypertension during Quarter 3. Coronary Artery Disease has remained consistent during all four Quarters with an average of percentages in the 60% range which is identified as the lowest chronic measure of all listed diseases. To reduce levels in all three chronic diseases, physicians are being trained to put special emphasis on these specific vulnerable populations.



Measuring Data on Chronic Measures

ODA Primary Health Care Network tracks performance data on chronic care measures quarterly. Data is measured for Coronary Artery Disease, Diabetes, and Hypertension. This data is run using the entire ODA Primary Health Care Network patient population. All facilities within ODA Primary Health Care Network operate under the same rules and regulations. The following charts show ODA's performance for October 1, 2014 through September 30, 2015 in all three areas. Please note that all facilities within ODA Primary Health Care Network operate under the same rules and regulations.

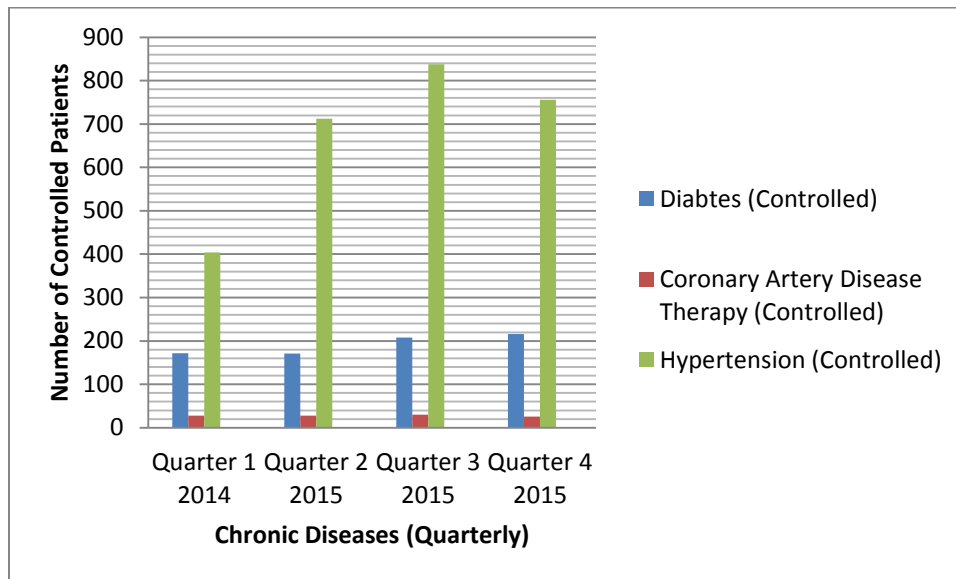
Coronary Artery Disease Therapy			
	LDL therapy	# of patients	Percentage
Q4 2004	28	42	67%
Q1 2015	28	46	61%
Q2 2015	30	46	65%
Q3 2015	26	38	68%

Diabetes			
	HgbA1C Below 8	# of patients	Percentage
Q4 2014	172	407	42%
Q1 2015	171	438	39%
Q2 2015	208	465	45%
Q3 2015	216	504	43%

Hypertension			
HTN Control			
	Controlled	# of patients	Percentage
Q4 2014	404	679	59%
Q1 2015	712	1,270	56%
Q2 2015	838	1,333	63%
Q3 2015	756	1,234	61%

Figure 2:

The figure below demonstrates the comparison between the three chronic measures for all four quarters. According to the data, Hypertension has the highest amount of controlled participants followed by diabetes. It can clearly be seen that there was an increase in Hypertension during Quarter 3. Coronary Artery Disease has remained consistent during all four Quarters with an average of percentages in the 60% range which is identified as the lowest chronic measure of all listed diseases. To reduce levels in all three chronic diseases, physicians are being trained to put special emphasis on these specific vulnerable populations.



Measuring Data on Chronic Measures

ODA Primary Health Care Network tracks performance data on chronic care measures quarterly. Data is measured for Coronary Artery Disease, Diabetes, and Hypertension. This data is run using the entire ODA Primary Health Care Network patient population. All facilities within ODA Primary Health Care Network operate under the same rules and regulations. The following charts show ODA's performance for October 1, 2014 through September 30, 2015 in all three areas. Please note that all facilities within ODA Primary Health Care Network operate under the same rules and regulations.

Coronary Artery Disease Therapy			
	LDL therapy	# of patients	Percentage
Q4 2004	28	42	67%
Q1 2015	28	46	61%
Q2 2015	30	46	65%
Q3 2015	26	38	68%

Diabetes			
	HgbA1C Below 8	# of patients	Percentage
Q4 2014	172	407	42%
Q1 2015	171	438	39%
Q2 2015	208	465	45%
Q3 2015	216	504	43%

Hypertension			
HTN Control			
	Controlled	# of patients	Percentage
Q4 2014	404	679	59%
Q1 2015	712	1,270	56%
Q2 2015	838	1,333	63%
Q3 2015	756	1,234	61%

Figure 2:

The figure below demonstrates the comparison between the three chronic measures for all four quarters. According to the data, Hypertension has the highest amount of controlled participants followed by diabetes. It can clearly be seen that there was an increase in Hypertension during Quarter 3. Coronary Artery Disease has remained consistent during all four Quarters with an average of percentages in the 60% range which is identified as the lowest chronic measure of all listed diseases. To reduce levels in all three chronic diseases, physicians are being trained to put special emphasis on these specific vulnerable populations.

